



**FEEL THE HEAT!**

## RT Seat Adapter for CanAm Maverick X3

Part # **15-2100** CanAm Maverick X3 Black

Congratulations on your purchase of the DragonFire RT seat brackets for CanAm Maverick X3. These brackets were designed to fit the RT seat into your vehicle without compromising any seat functions. Be sure to check out the full line of DragonFire Accessories for your CanAm vehicle at your local authorized dealer or online at <http://www.DragonFireRacing.com>

**Only for DragonFire RT Seats P/N: 15-0000 & 15-0001 (Sold Separately)**



- Read and understand these instructions before installing product
- This product does not provide protection in the event of a collision or roll over
- Improper installation may result in product malfunction
- Do not use product if there are any signs of damage

### Tools Required

7/16" Socket or Wrench

13mm Socket or Wrench

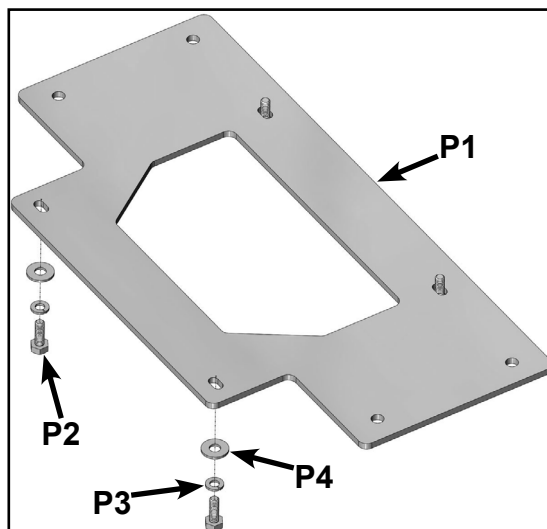
Extension

Ratchet

### Disclaimer

Off road activities can be hazardous and could lead to injury, dismemberment, paralysis and death. No warranty of representation is made as to the products ability to protect the user from any injury or death. The user assumes that risk. The acceptance and /or use of this merchandise purchased from DragonFire by the customer hereby shall release DragonFire from any and all liability pertaining to the use of such merchandise.

**Pre-installation:** Lay out components and compare to list and images.



### Part & Hardware List

ITEM	QTY	SIZE	LENGTH	TYPE	STEP USED
P1	2	-	-	Seat Adapter	6
P2	8	1/4"-20	3/4"	Hex Bolt - Zinc	10 & 11
P3	8	1/4"	-	Split Lock Washer - Zinc	10 & 11
P4	8	1/4"	-	Flat Washer - Zinc	10 & 11



DragonFire

**Step 1:** Place vehicle on a flat and level surface. Place gear selector in "Park" and remove keys from the ignition.

**Step 2:** Use the seat adjuster to move the seat all the way forward. (Figure A)

**Step 3:** Remove factory seat cushion. (Figure B)

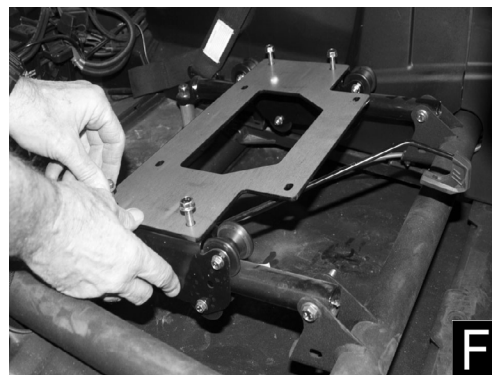
**Step 4:** Remove factory bolts and brackets. Retain bolts for later use and discard brackets. (Figure C)



**Step 5:** Remove factory seat from the vehicle. (Figure D)

**Step 6:** Align holes of seat bracket (P1) to holes of the frame as shown. (Figure E)

**Step 7:** Install factory bolts from Step 4 into the bracket and frame. (Figure F)



**Step 8:** Torque factory bolts to factory specifications. (Figure G)

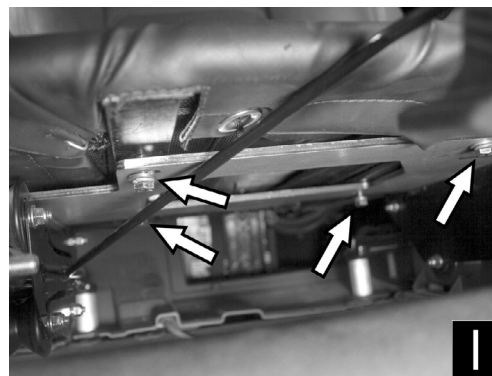
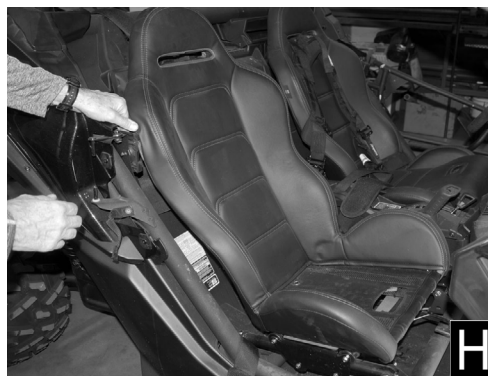
**Step 9:** Locate the DragonFire RT Seat (**sold separately**) and remove seat cushion. Then place the RT Seat on the seat bracket. (Figure H)

**Step 10:** Locate the supplied hardware and arrange them in the following order: bolt (P2), lock washer (P5), and flat washer (P6).

**Step 11:** Then install 4 sets of the hardware to the holes of seat bracket and seat frame. (Figure I)

**Note:** For ease of installing hardware, it is recommended to use a thin Allen wrench, dowel pin, or rod to align holes of seat to bracket.

**Step 12:** Torque all 4 bolts to 5ft-lbs (60in-lbs). Shake the seat to verify it is firmly set in position.



**Step 13:** Place the seat cushion back onto the seat and adjust the seat back to the desired position. (Figure J)

**Step 14:** Repeat Step 2 to 15 for opposite seat. (Figure K)

**Step 15:** This completes installation. Time to ride and enjoy!

**ProTip:** Periodically check all hardware and re-tighten if needed.

For further assistance please contact us at  
[customerservice@dragonfireracing.com](mailto:customerservice@dragonfireracing.com) or 1-800-708-9803.



DragonFire