

RZR BASKET ROOF MOUNTING INSTRUCTIONS



PLEASE NOTE:

1. THE MOUNTING OF THIS ROOF IS NOT INTENDED TO HOLD FOR TRANSPORTING ON AN OPEN TRAILER OR TRUCK. IT MUST BE REMOVED OR SECURED WITH A SECONDARY DEVICE FOR SUCH TRANSPORTING. WE ARE NOT RESPONSIBLE FOR LOSS OR ANY DAMAGE DUE TO TRANSPORTING ON AN OPEN TRAILER OR VEHICLE.
2. THE MAXIMUM LOAD CAPACITY OF THE CARGO AREA IS 20 LBS.

TOOLS REQUIRED FOR INSTALLATION:

ITEM	DESCRIPTION
1	2- 7/16" WRENCHES

PARTS LIST:

- | | |
|---|--|
| 1 | RZR PLASTIC BASKET ROOF |
| 2 | 4 TUBE P CLAMP W/VINYL CUSHION |
| 3 | 4 1/4" - 28 X 1" STAINLESS STEEL HEX CAP SCREW |
| 4 | 8 1/4" X 1" OD STAINLESS STEEL FENDER WASHER |
| 5 | 4 1/4" - 28 STAINLESS STEEL TYPE NE NYLON INSERT NUT |

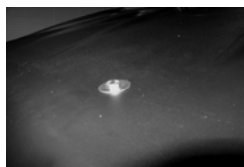
MOUNTING STEPS

- 1 PLACE THE ROOF ON TOP OF THE VEHICLE
- 2 LOCATE THE MOUNTING HOLES AND PLACE A P CLAMP AROUND THE TUBE AT EACH LOCATION
- 3 INSERT A 1/4" HEX CAP SCREW WITH A FENDER WASHER ON IT FROM THE TOP DOWN THROUGH THE PLASTIC ROOF AND THE P CLAMP (REFER TO ILLUSTRATIONS A & B)
- 4 PLACE A FENDER WASHER ON THE CAP SCREWS AND SECURE WITH THE NYLON INSERT NUT (REFER TO ILLUSTRATION C)

A

B

C



RZR BASKET ROOF MOUNTING INSTRUCTIONS



PLEASE NOTE:

1. THE MOUNTING OF THIS ROOF IS NOT INTENDED TO HOLD FOR TRANSPORTING ON AN OPEN TRAILER OR TRUCK. IT MUST BE REMOVED OR SECURED WITH A SECONDARY DEVICE FOR SUCH TRANSPORTING. WE ARE NOT RESPONSIBLE FOR LOSS OR ANY DAMAGE DUE TO TRANSPORTING ON AN OPEN TRAILER OR VEHICLE.
2. THE MAXIMUM LOAD CAPACITY OF THE CARGO AREA IS 20 LBS.

TOOLS REQUIRED FOR INSTALLATION:

ITEM	DESCRIPTION
1	2- 7/16" WRENCHES

PARTS LIST:

- | | |
|---|--|
| 1 | RZR PLASTIC BASKET ROOF |
| 2 | 4 TUBE P CLAMP W/VINYL CUSHION |
| 3 | 4 1/4" - 28 X 1" STAINLESS STEEL HEX CAP SCREW |
| 4 | 8 1/4" X 1" OD STAINLESS STEEL FENDER WASHER |
| 5 | 4 1/4" - 28 STAINLESS STEEL TYPE NE NYLON INSERT NUT |

MOUNTING STEPS

- 1 PLACE THE ROOF ON TOP OF THE VEHICLE
- 2 LOCATE THE MOUNTING HOLES AND PLACE A P CLAMP AROUND THE TUBE AT EACH LOCATION
- 3 INSERT A 1/4" HEX CAP SCREW WITH A FENDER WASHER ON IT FROM THE TOP DOWN THROUGH THE PLASTIC ROOF AND THE P CLAMP (REFER TO ILLUSTRATIONS A & B)
- 4 PLACE A FENDER WASHER ON THE CAP SCREWS AND SECURE WITH THE NYLON INSERT NUT (REFER TO ILLUSTRATION C)

A

B

C

